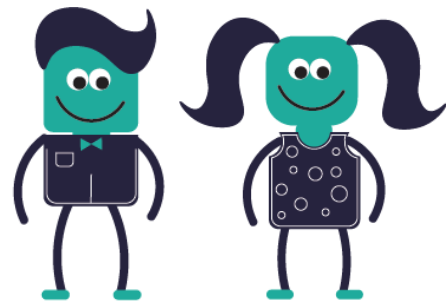


Subject choice checklist:



Checklist questions:	Yes/No
Have you selected your subjects yet?	
Do you know what subjects you are going to take?	
Do you know which subjects are required for your career path?	
Do you know what your strengths are academically?	
Do you have a clear picture of your future?	

If you said no to any of the above questions, we would be happy to have a free consultation to discuss your needs and how to get the most out of your subject choice decisions.

Full subject choice assessment: Comprehensive and holistic measurement of aptitude, personality, interest, study habits and career maturity.

Aptitude: Assessment of vocabulary, verbal reasoning, non-verbal reasoning, calculations, comprehension, comparison, spatial visualisation, mechanical insight and memory

Personality: Assessment of personality preferences and tendencies according to Jung personality codes of extraversion-introversion, sensing-intuition, thinking-feeling and judging-perceiving

Interests: Assessment of key occupational fields, activities and competencies that might be of interest to the learner. A recognised code is produced according to the RIASEC model (Practical-realistic, Scientific-Investigative, Artistic, Social, Enterprising and Conventional).

Study Habits: Assessment of a learner's current study habits, attitudes and overall study orientation including delayed avoidance, work methods, educational acceptance and teacher approval

Career maturity: Assessment of the learner's readiness to make decisions toward their future and life after school. Measurement of self-information, career information, the integration of the two and career planning.

Includes: A formal intake interview, the assessments, fully integrated, in-depth report and, personalised feedback.

Note:

- Assessments can vary depending on the individual and what suits them best
- Assessments can be conducted online or paper-and-pencil
- Assessments can be conducted remotely or at the learner's residence
- Feedback can be delivered telephonically or face-to-face
- T's and C's Apply